

Assembly Instructions

CORDLESS STARTER PACK KIT

STPK-2150

Before starting the assembly of your starter pack kit, it is necessary that you obtain the ten (10) battery cells for it. The cells you need are 1.2 ampere-hour cells for it. The cells you need are 1.2 ampere-hour nickel-cadmium cells commonly referred to as "Sub-C size". As the over the counter price of these cells is very high, we recommend that you try the following sources for surplus cells: photographic equipment such as rechargeable flash units, rechargeable electric shavers, self-starting lawn and garden equipment, rechargeable flashlight batteries (most of these "C" and "D" size cells have a "Sub-C" cell inside the dummy case, look for the capacity or ampere-hour rating), 1/12 scale electric race cars (sometimes cells which are not "competitive" in the race cars will work out fine in a starter pack). If the cells are cup welded into pairs or are tab welded into sets, this may be easier so analyze what you need to do to them before you break them apart.

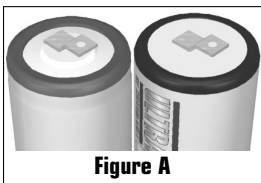
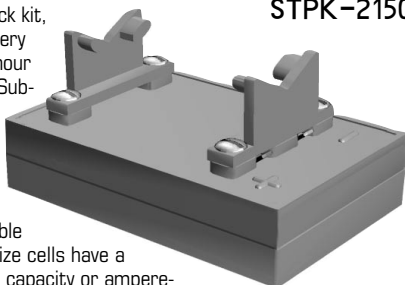


Figure A

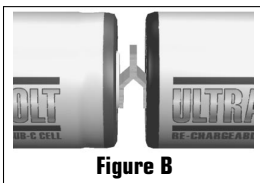


Figure B

Now on the assembly of your kit. If you have cup welded pairs of cells you can skip these first few steps. If you have individual cells, bend the tabs as in **Fig. A** and solder as in **Fig. B** being sure to solder positive (+) to negative (-). To identify which is which on an unmarked cell, the end with the bump in the middle is positive (+) and the flat end is negative (-). Make 5 pairs of cells in this manner.

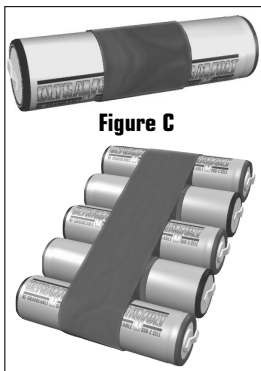


Figure C

Once this is accomplished, squeeze the cells together, flattening the tabs, and wrap a piece of tape around them. Arrange the five pairs of cells as shown in **Fig. C** and solder the jumper wires between the cells using #16 wire. Be sure to keep the wires as flat against the cells as possible or you will have trouble getting the pack into the case. Now, again using #16 wire connect the battery pack to the solder tabs inside the top case, as in **Fig. D**, being careful to connect positive to positive and negative to negative. Screw the top and bottom halves of the case together using the supplied 4-40 X 3/4 fillister head screws and the battery pack unit is complete.

NOTE: 2 of these screws go in from the top and 2 from the bottom.

(continued on back of page...)

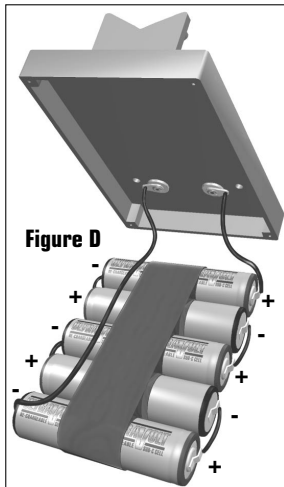
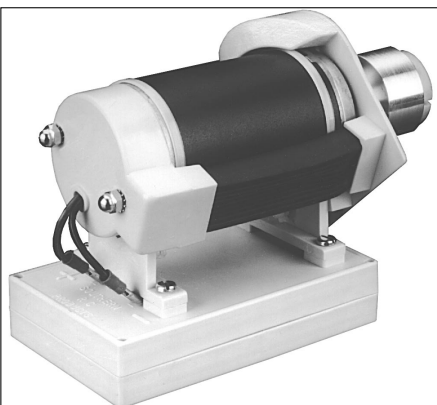


Figure D

DAVE BROWN PRODUCTS INC.
MADE IN USA



**COMPLETED STARTER PACK WITH STARTER.
(Starter and batteries are not included..)**

Mount the starter motor supports to the battery case with the mounting lugs facing in using the 10-32x 1/2 screws. Put a small square of sticky foam tape on each of the mounting lugs to cushion starter and mount the starter to the support using the nylon straps. Pull the straps TIGHT.

NOTE: when using some makes of starters, it is necessary to cut off the extra square switch bracket in order to mount it on the starter pack. This can be done easily using a hacksaw. Cut the motor leads to 3" length and strip back 1/2". Crimp the female spade connector onto each lead and connect to terminals on the battery pack. Your starter pack is now ready to go. If the starter runs backwards, simply reverse the connectors.

CHARGING: Charge batteries at 100mA for 24 hours being careful that you connect the charger plus lead to the battery plus terminal. A companion Starter Pack Charger is available from DAVE BROWN PRODUCTS which has its output adjusted for the starter pack.

Normally, several weeks operation can be expected from your cordless starter pack without recharging but we recommend that you charge your pack at least once a week during the flying season and at least once a month during the off seasons.



**STARTER PACK CHARGER
(Available serparately.)**

REPLACEMENT PARTS ARE AVAILABLE

(Call for pricing and availability)

DAVE BROWN PRODUCTS INC.

4560 Layhigh Road, Hamilton, Ohio 45013
Voice: 513/738-1576 • Fax: 513/738-0152